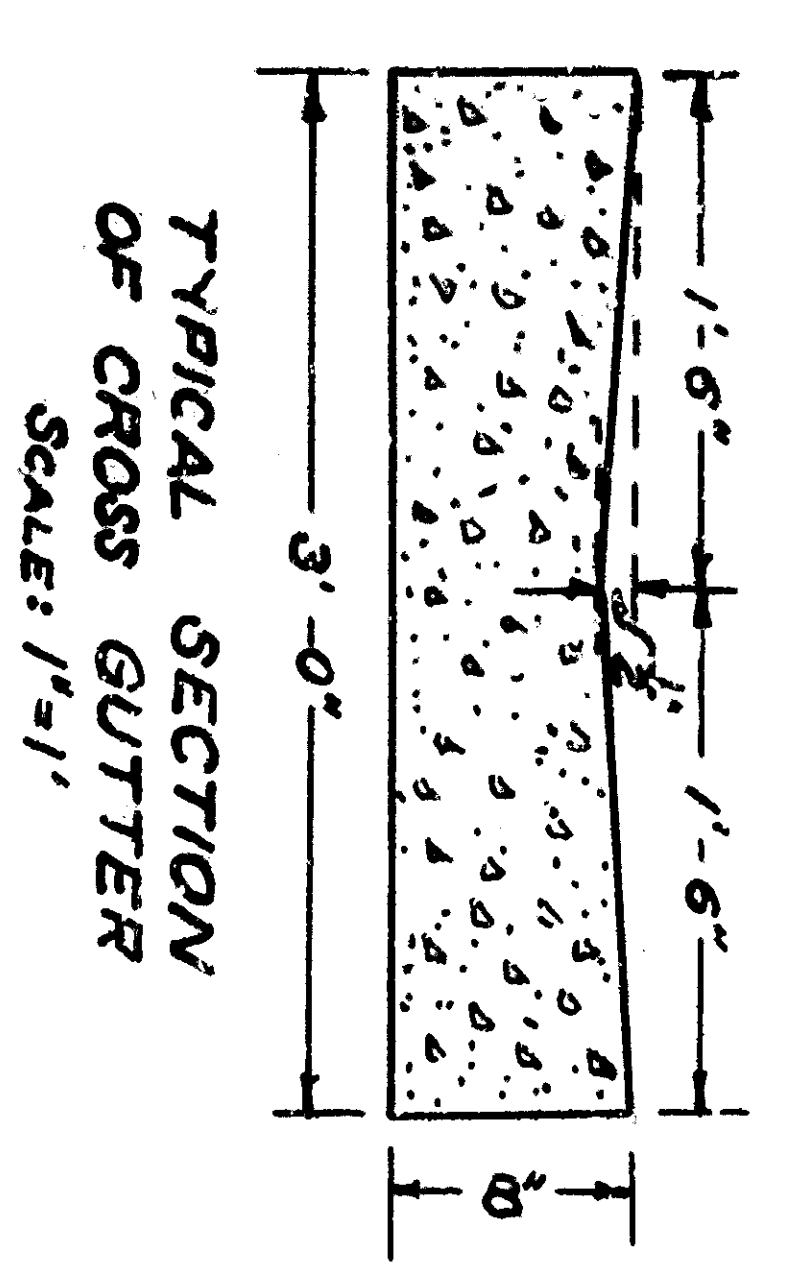
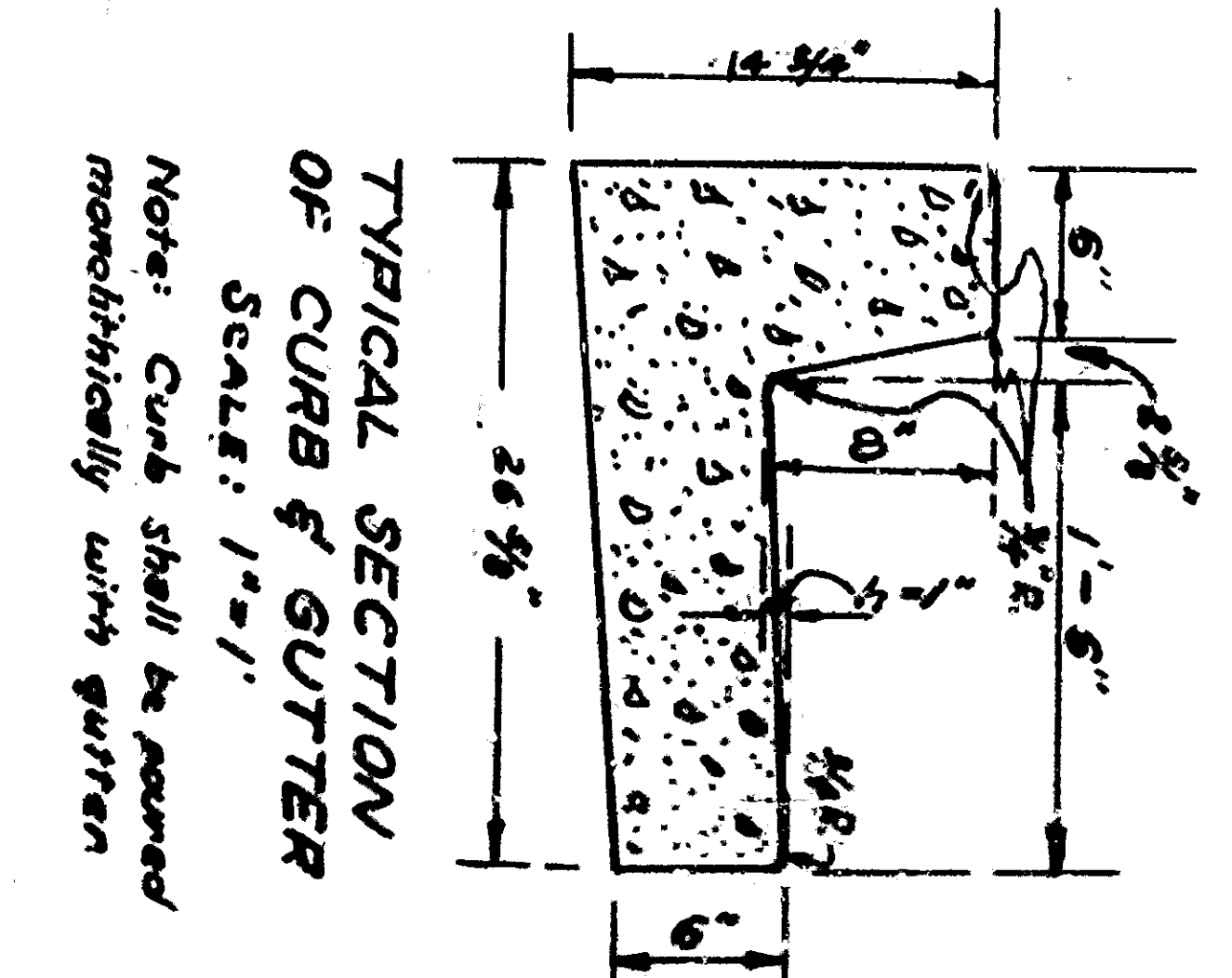
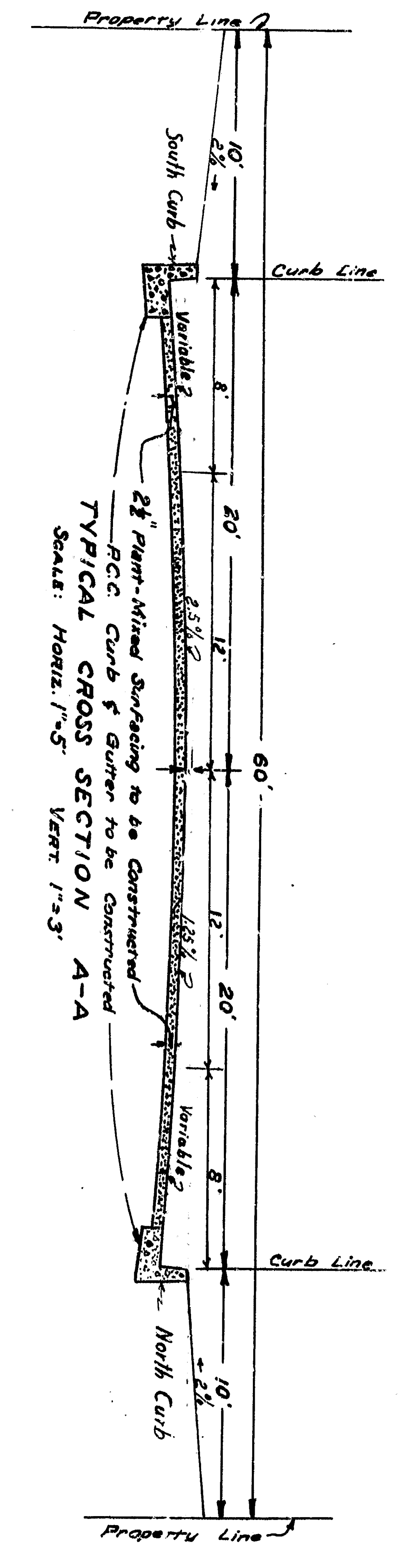
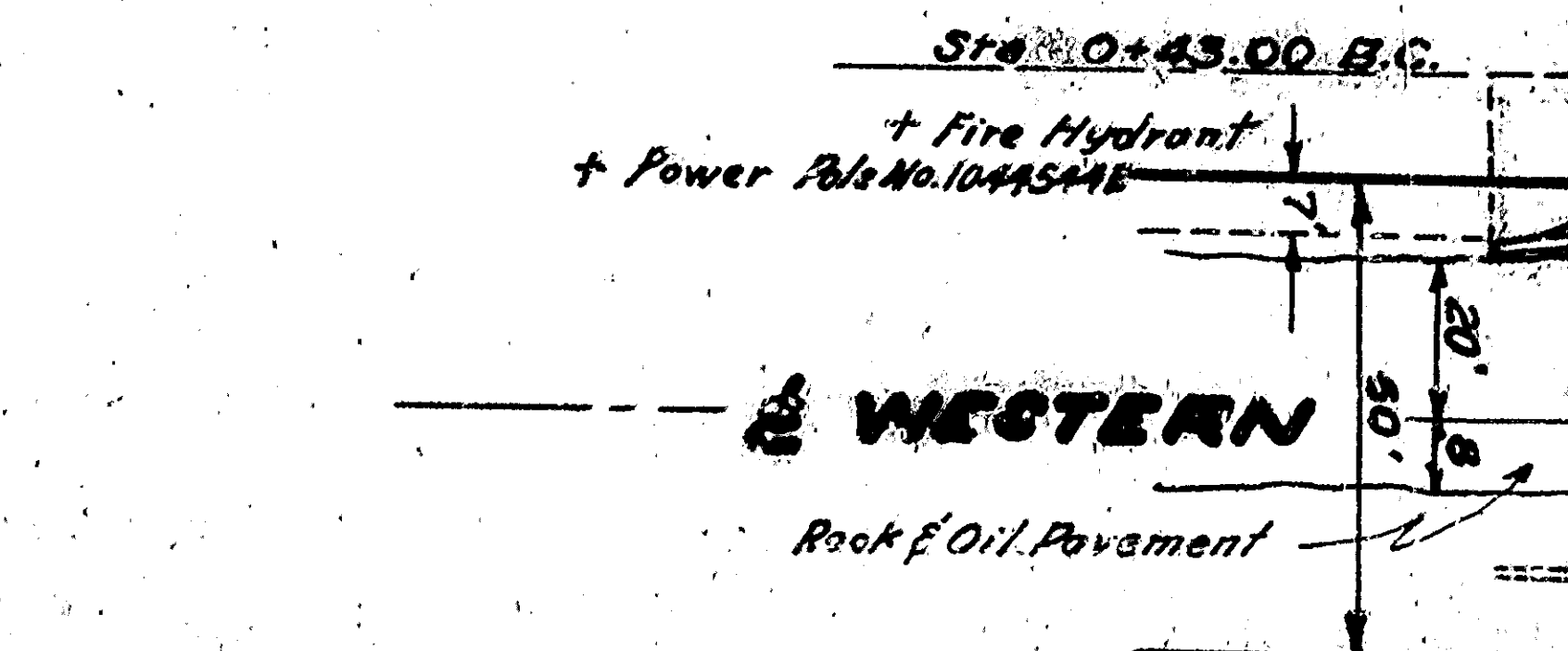
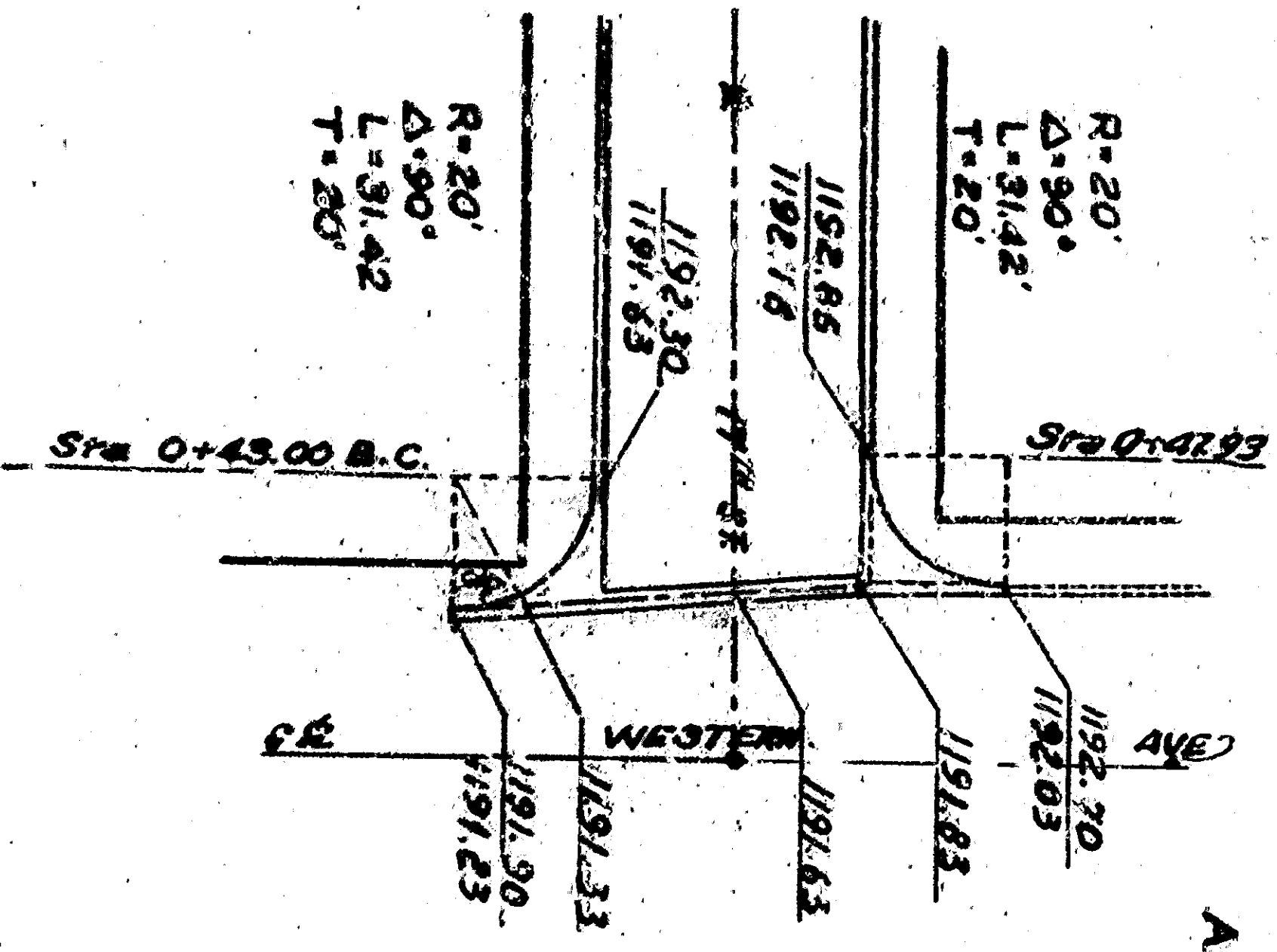
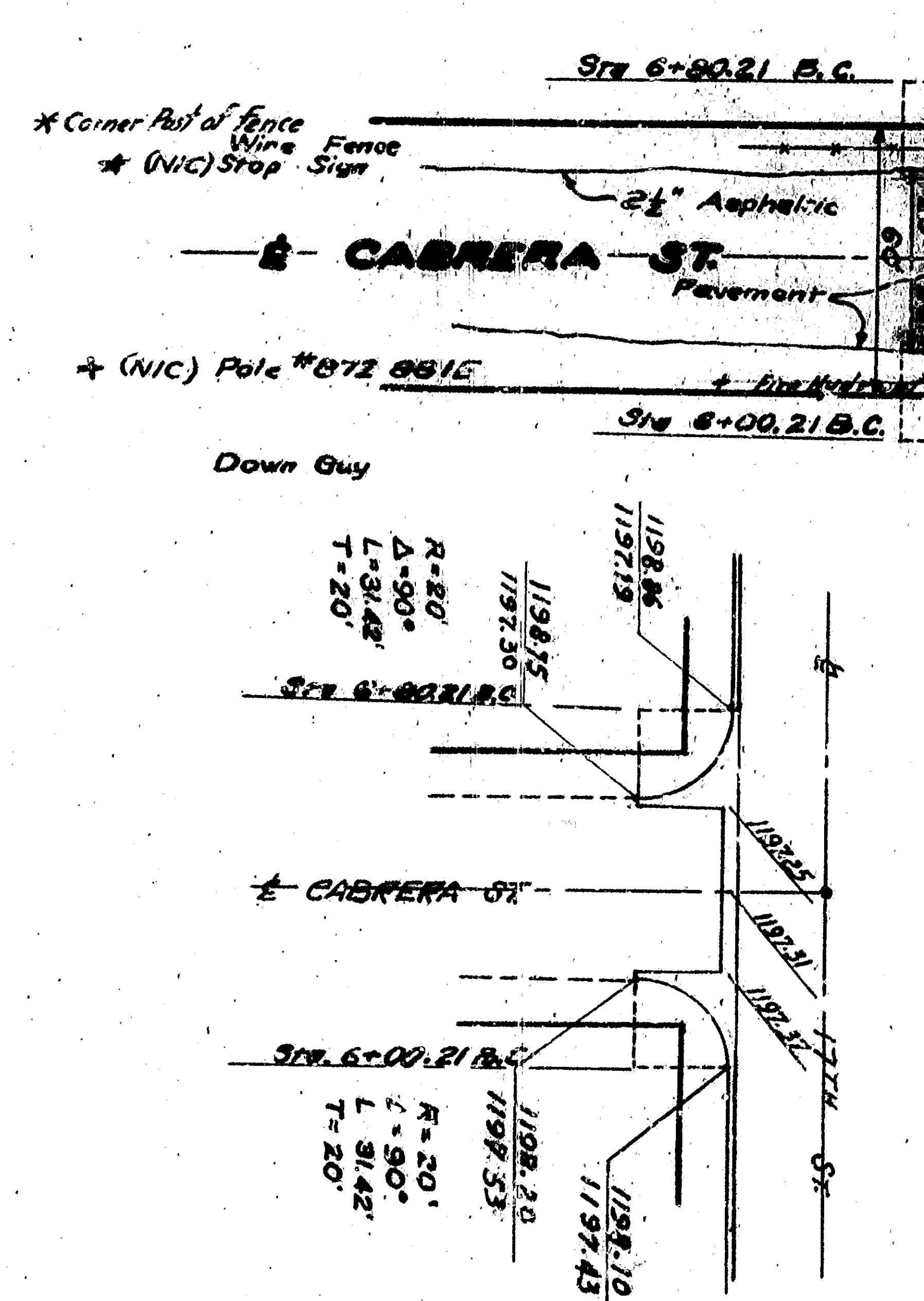
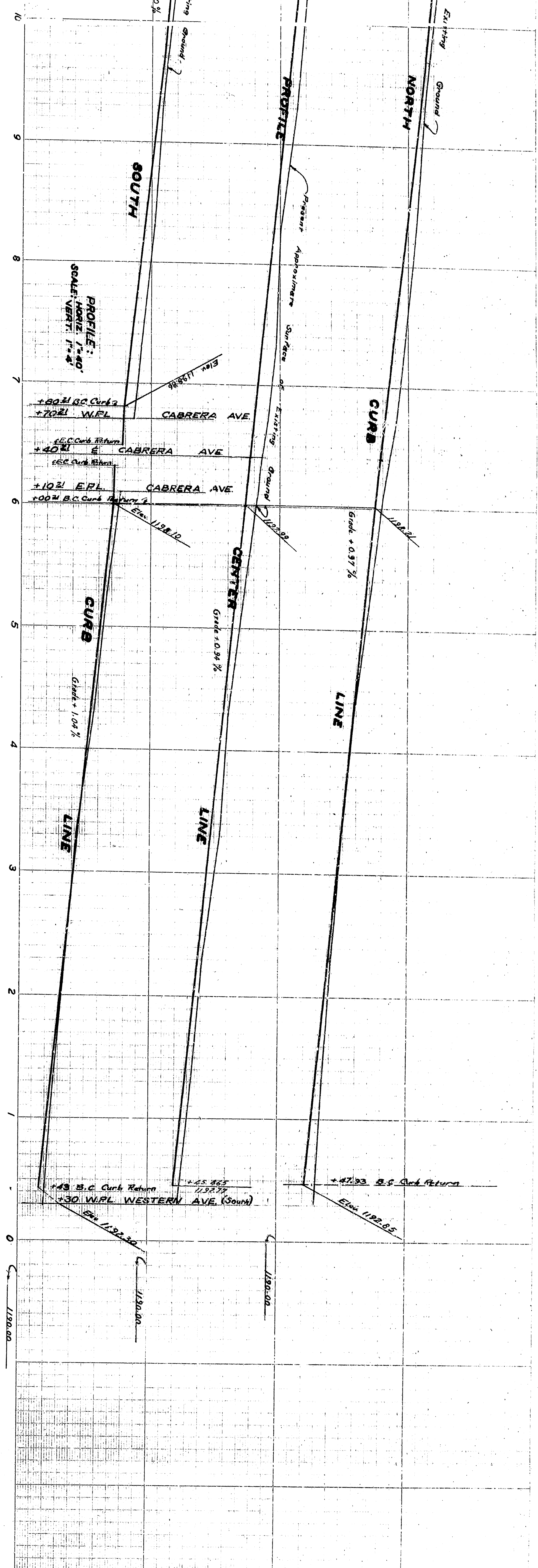
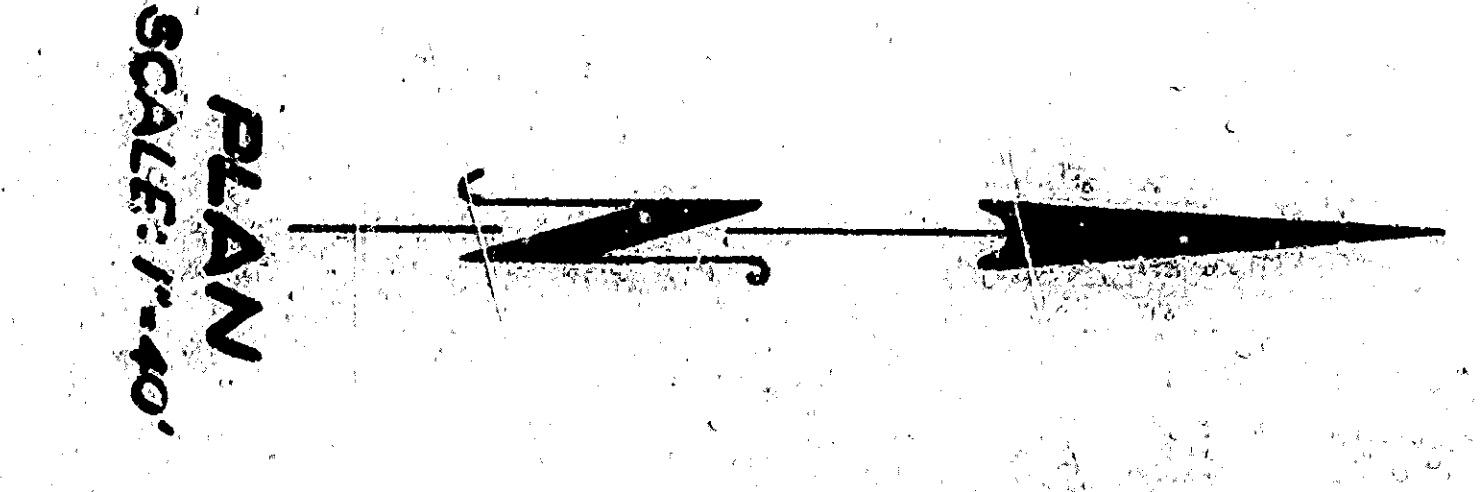


Pole # F 9052 Y

Pole # F 9051 Y



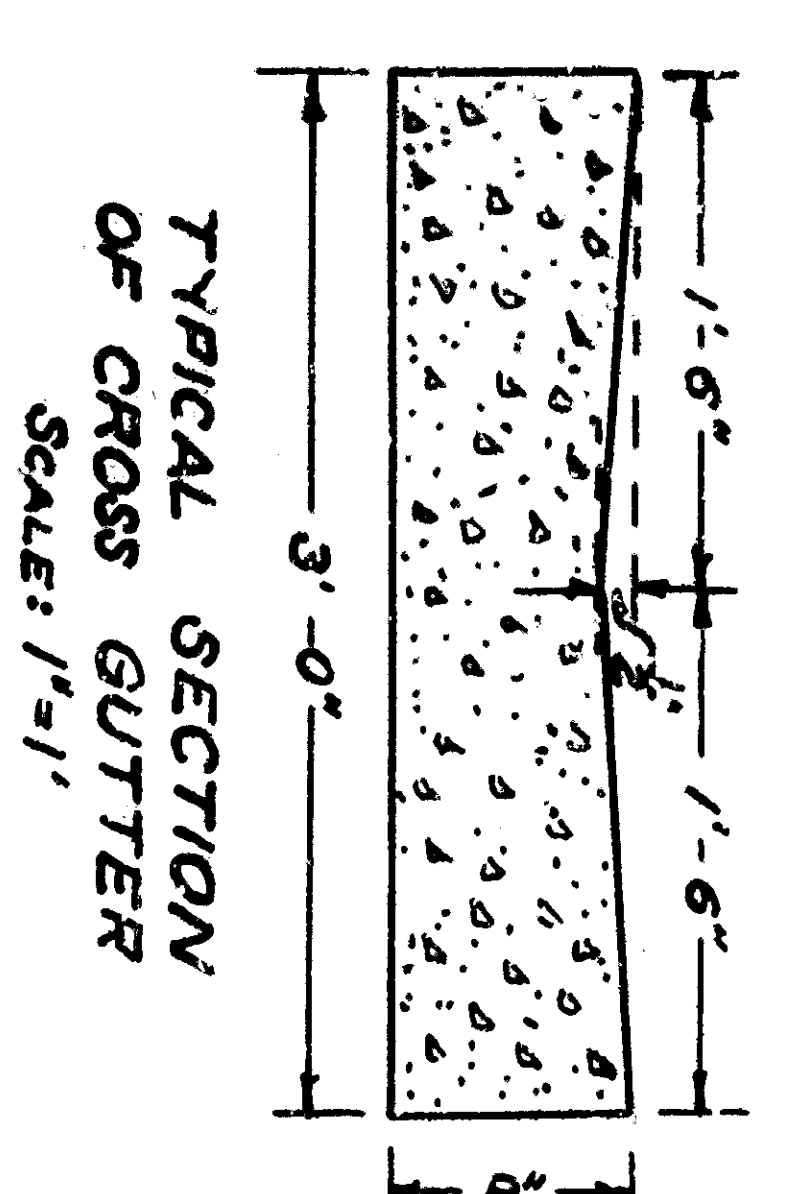
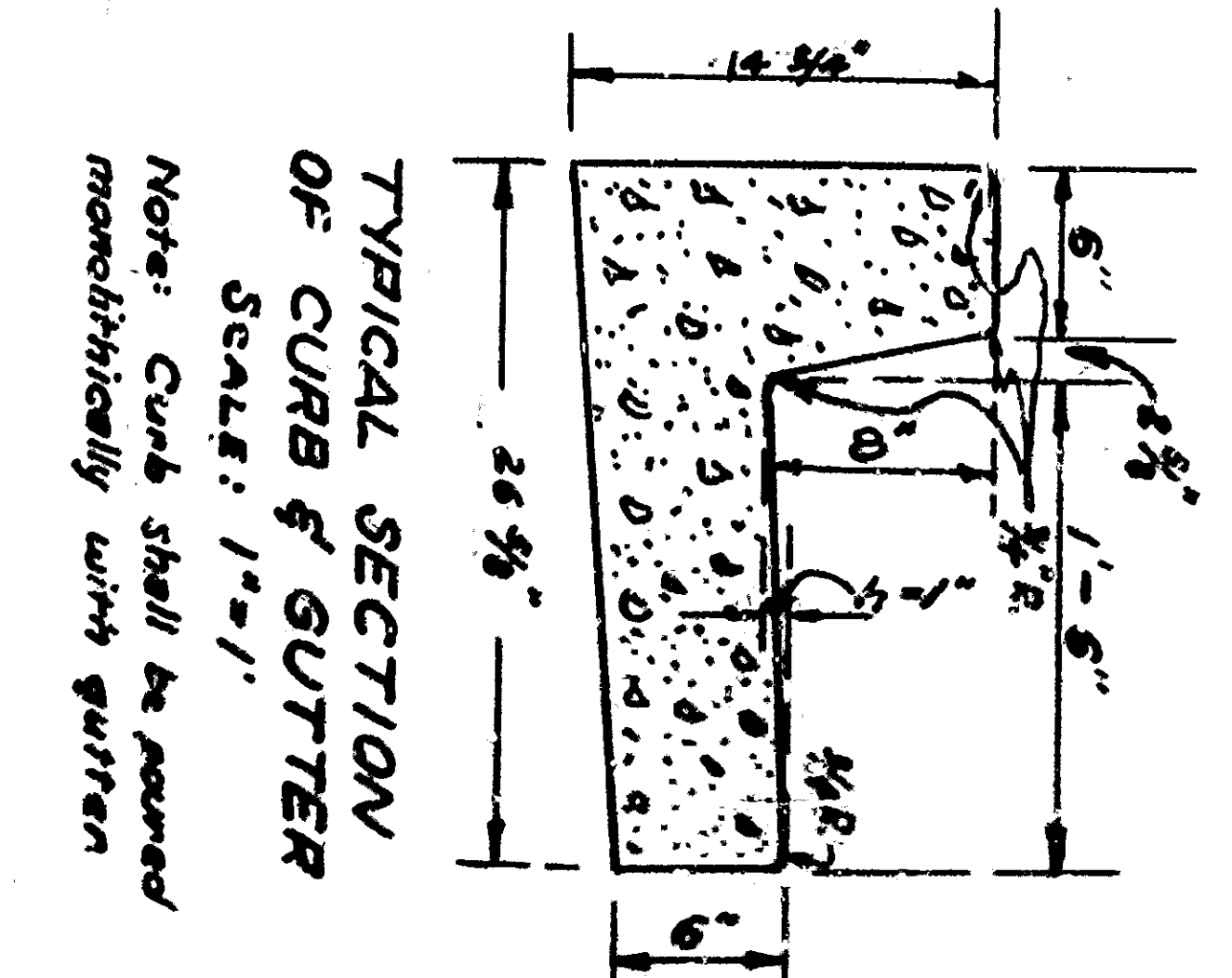
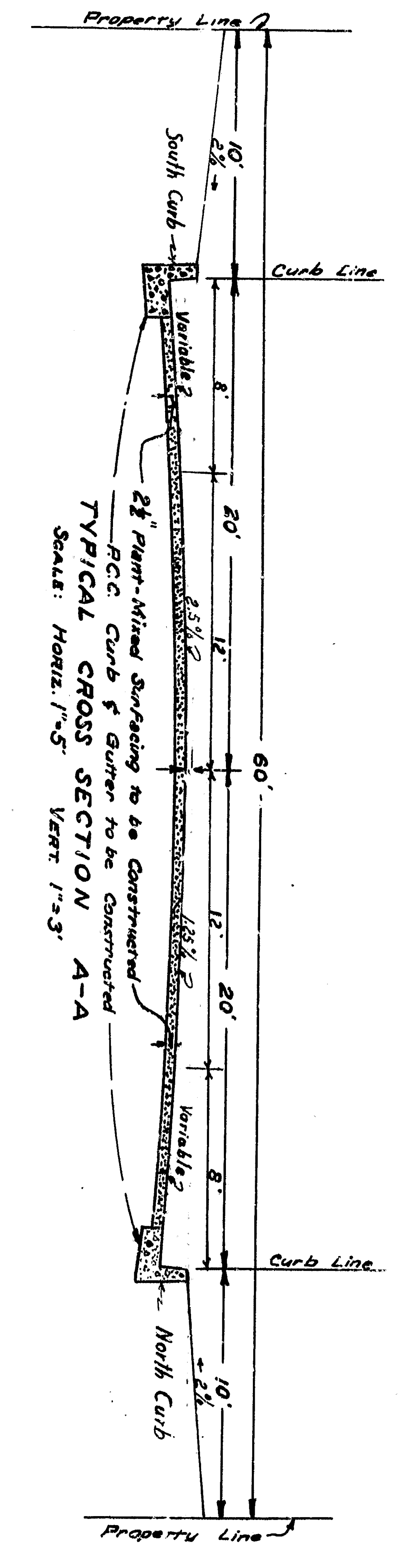
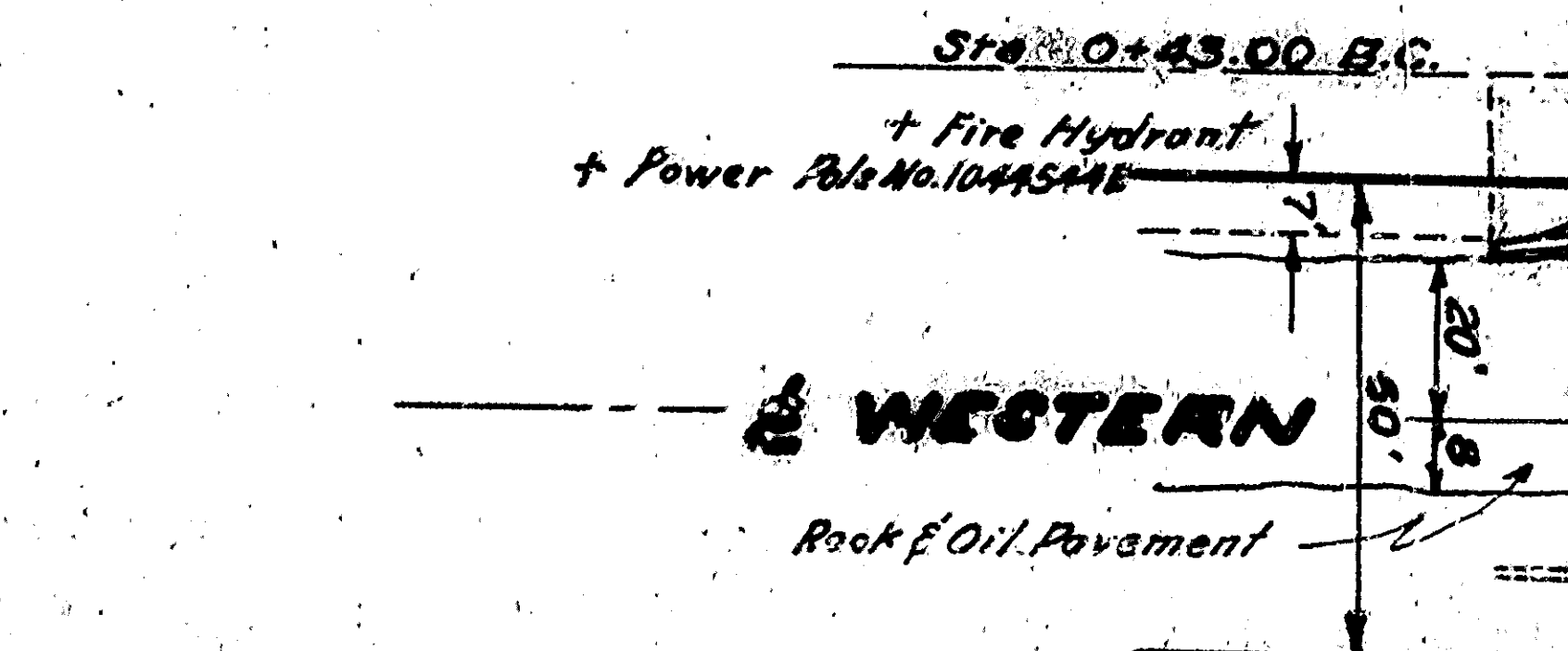
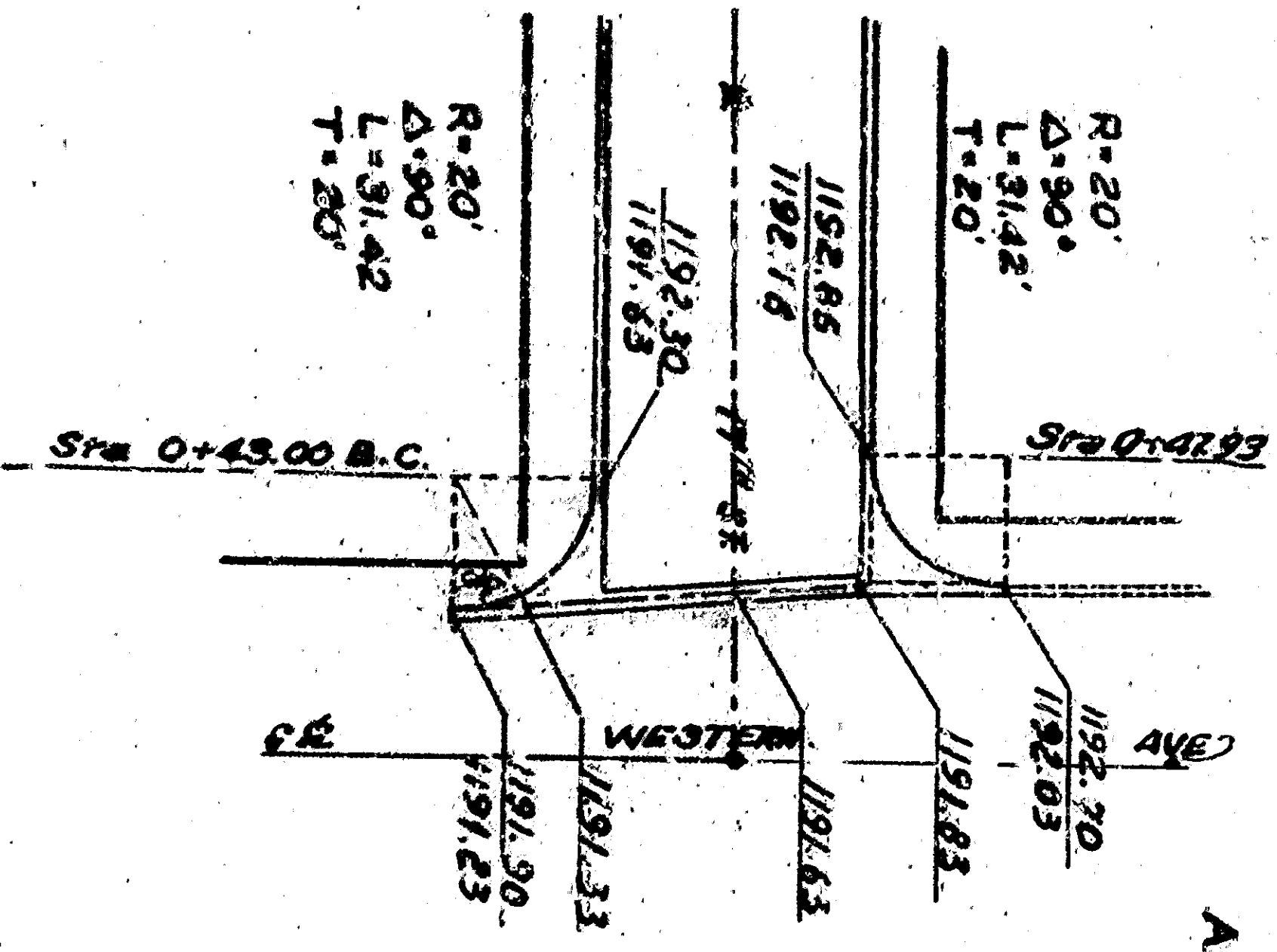
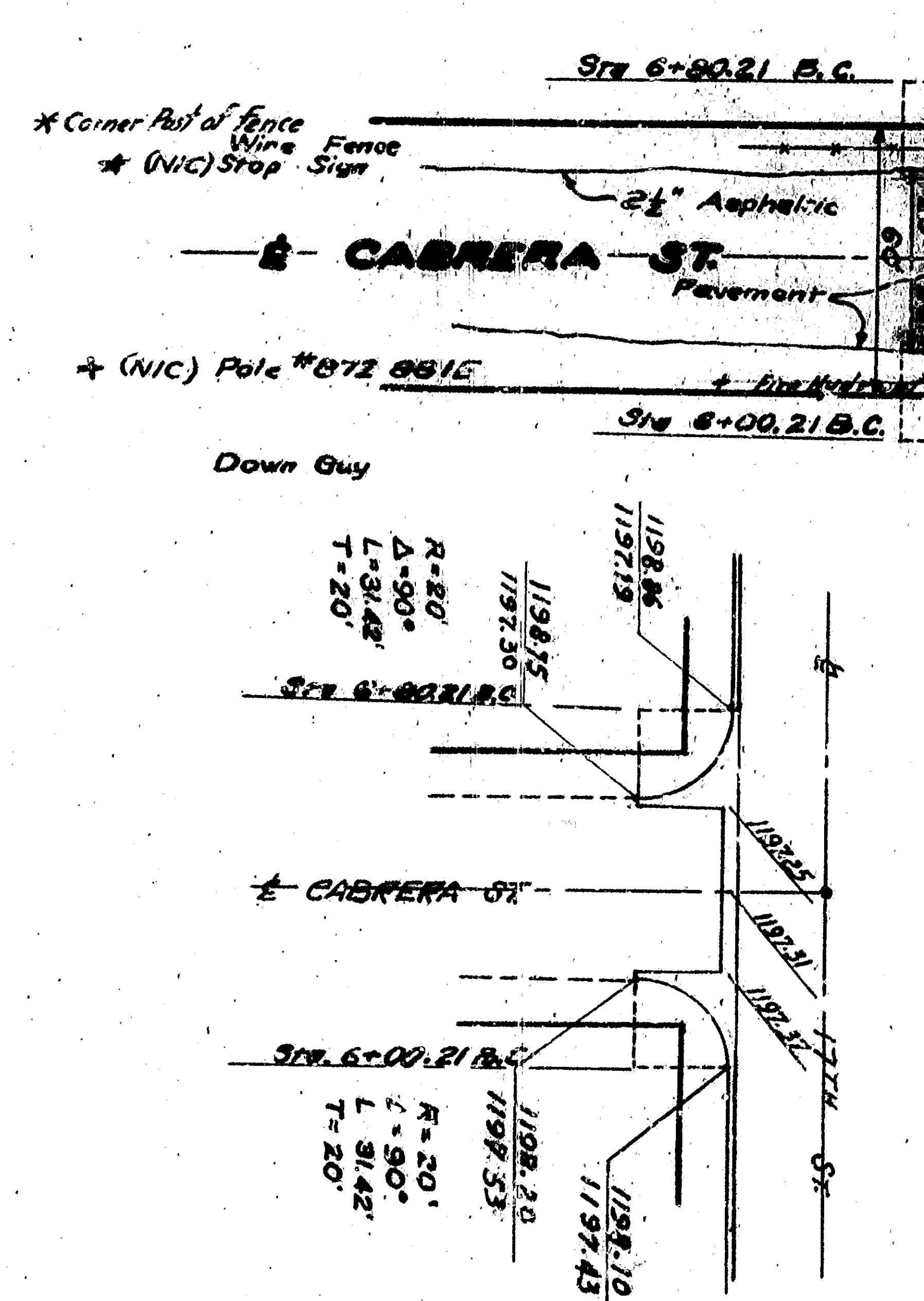
Pub # 113-111-245,2



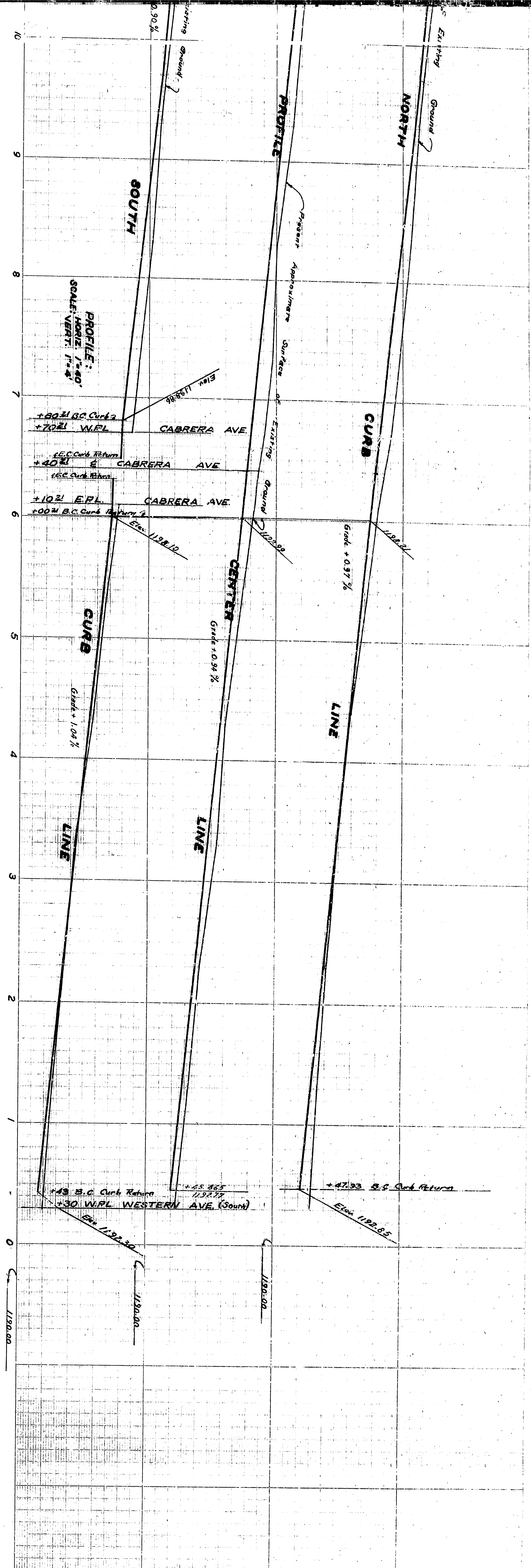
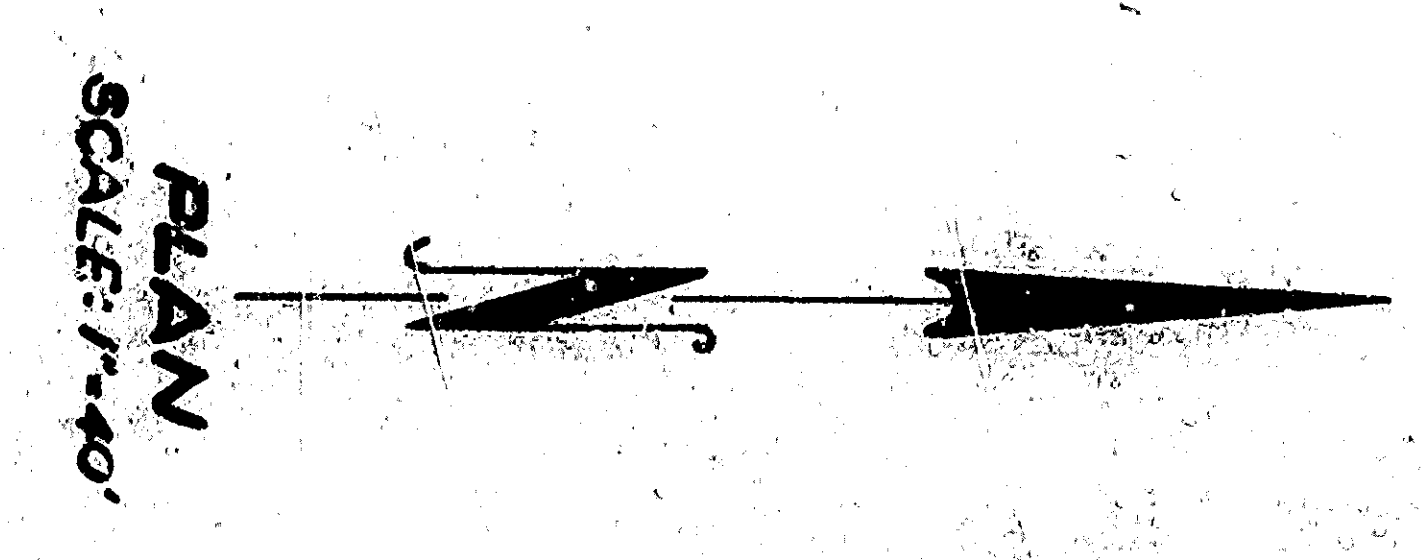
DEPARTMENT OF ENGINEERING
 CITY OF SAN BERNARDINO
 SEVENTEENTH STREET -
 WESTERN AVE TO MUSCOTT ST.
 WESTERN AVENUE -
 WESTERN ST TO GOODLETT ST
 CIVIL ENGINEER
 DRAWN BY
 CHECKED BY

Pole # F 9052 Y

Pole # F 9051 Y



Pub # 113-111-245,2



PROFILE:
HORIZ: 1"=40'
VERT: 1"=4'

1190.00

1190.00

1190.00

1190.00

1190.00

1190.00

1190.00

1190.00

1190.00

1190.00

1190.00

1190.00

1190.00

1190.00

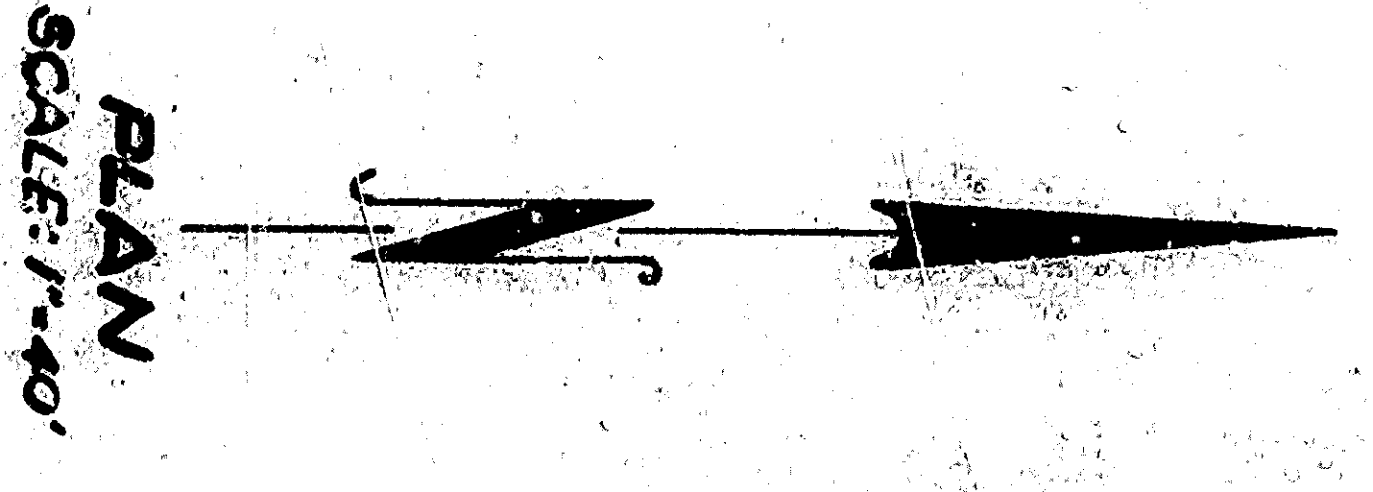
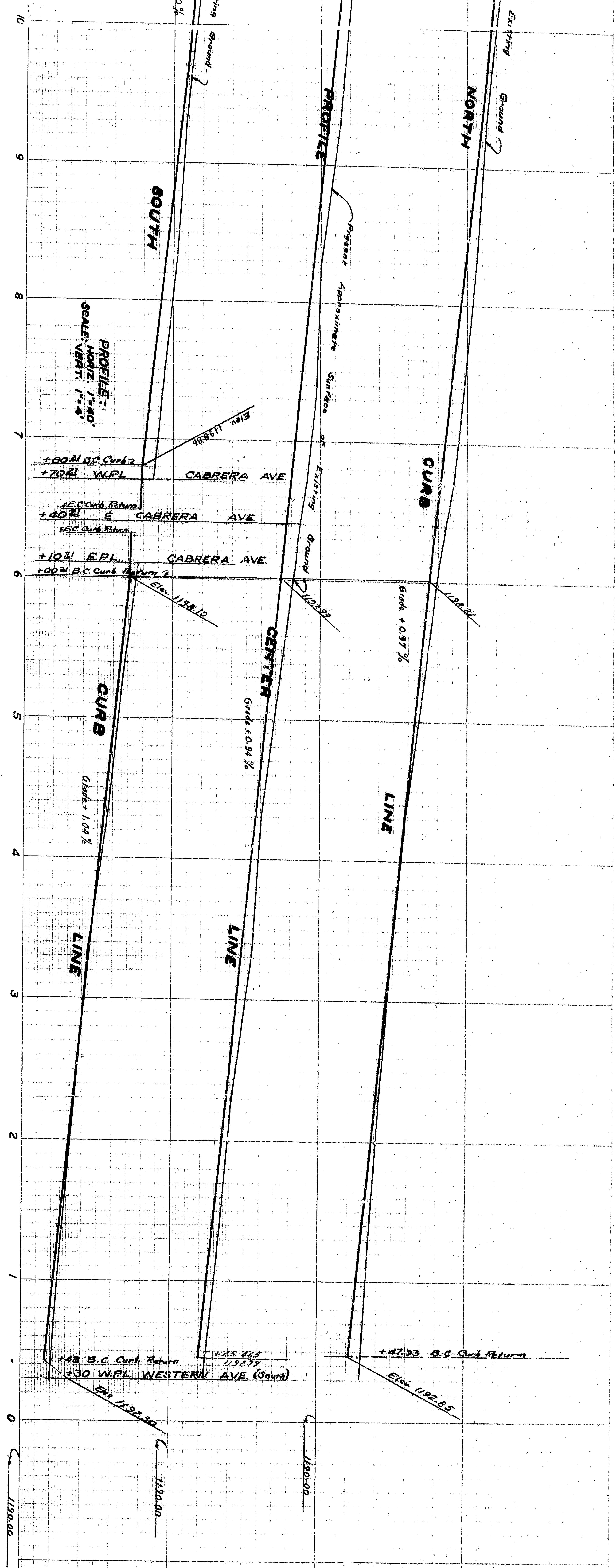
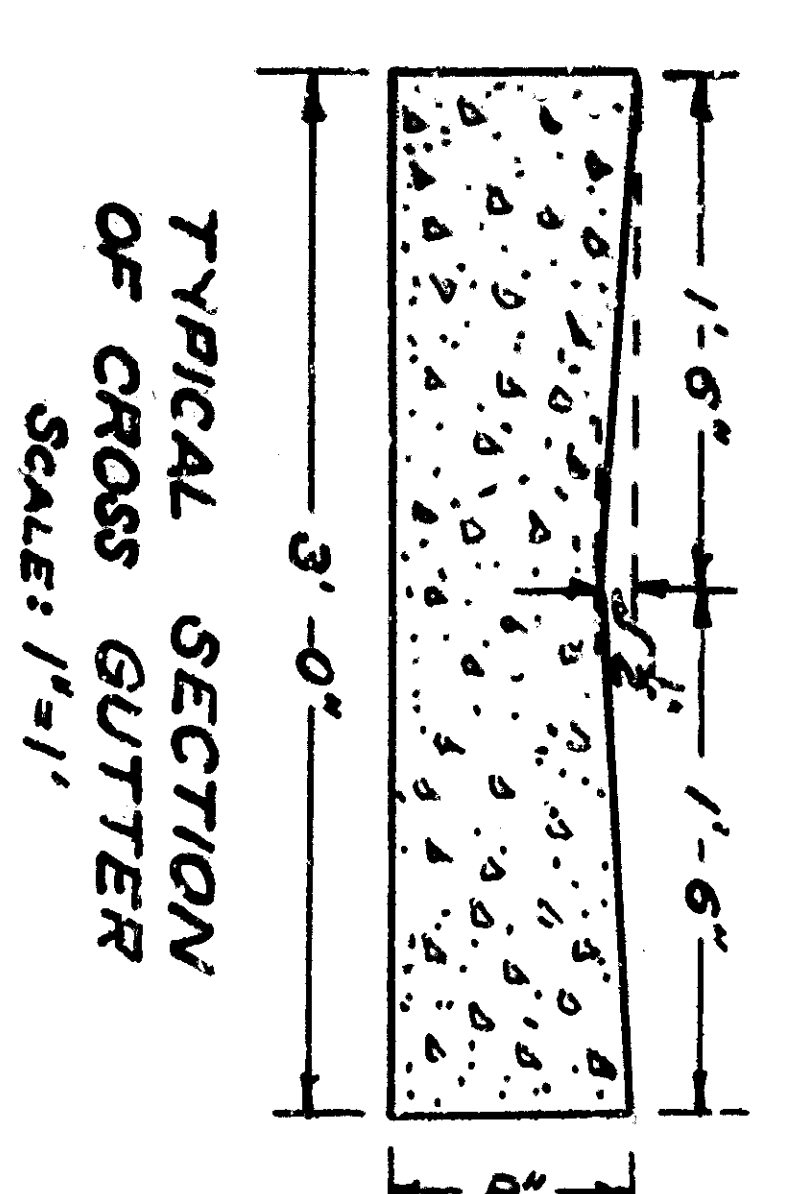
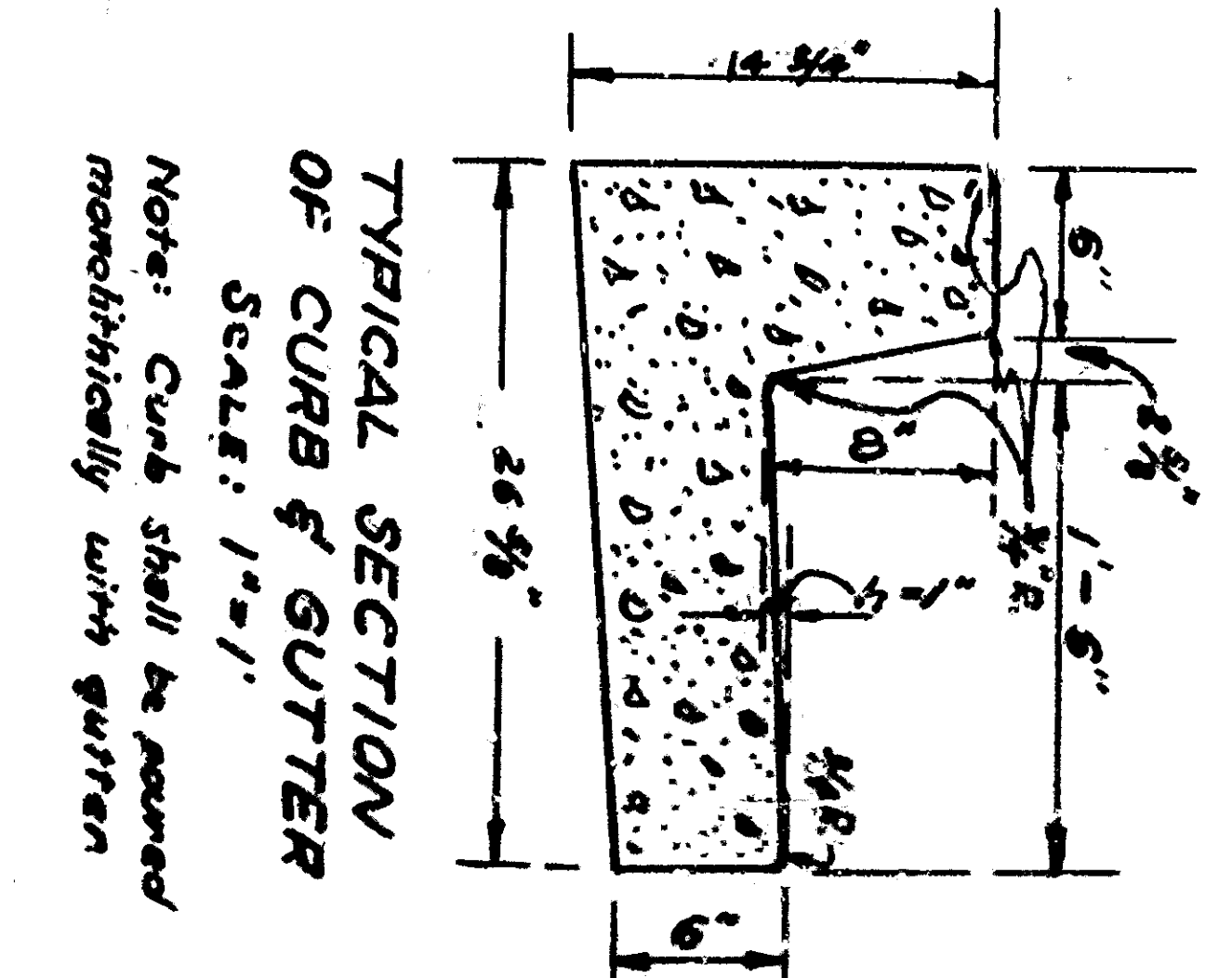
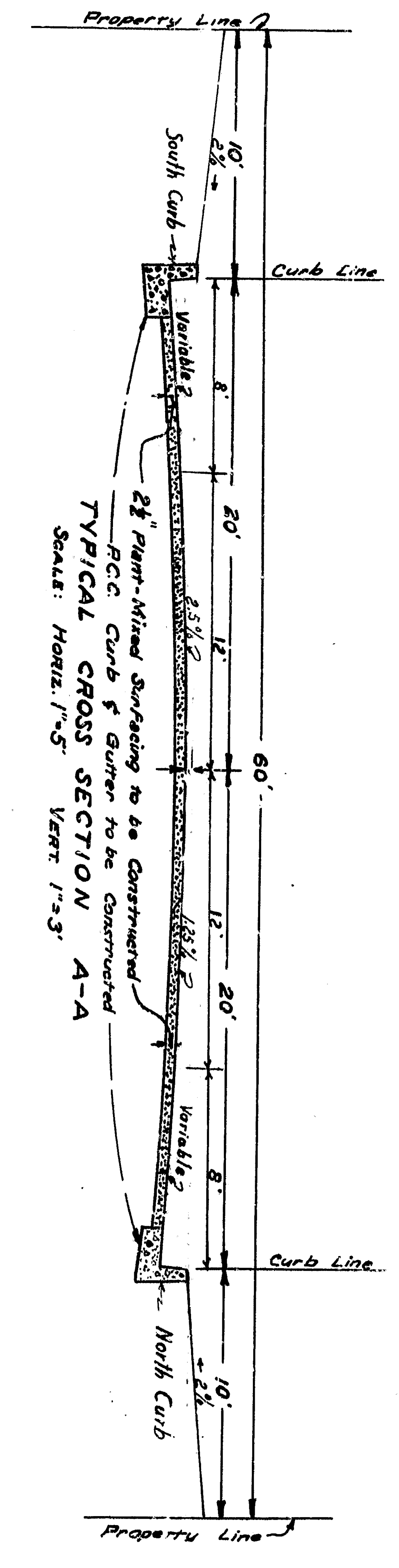
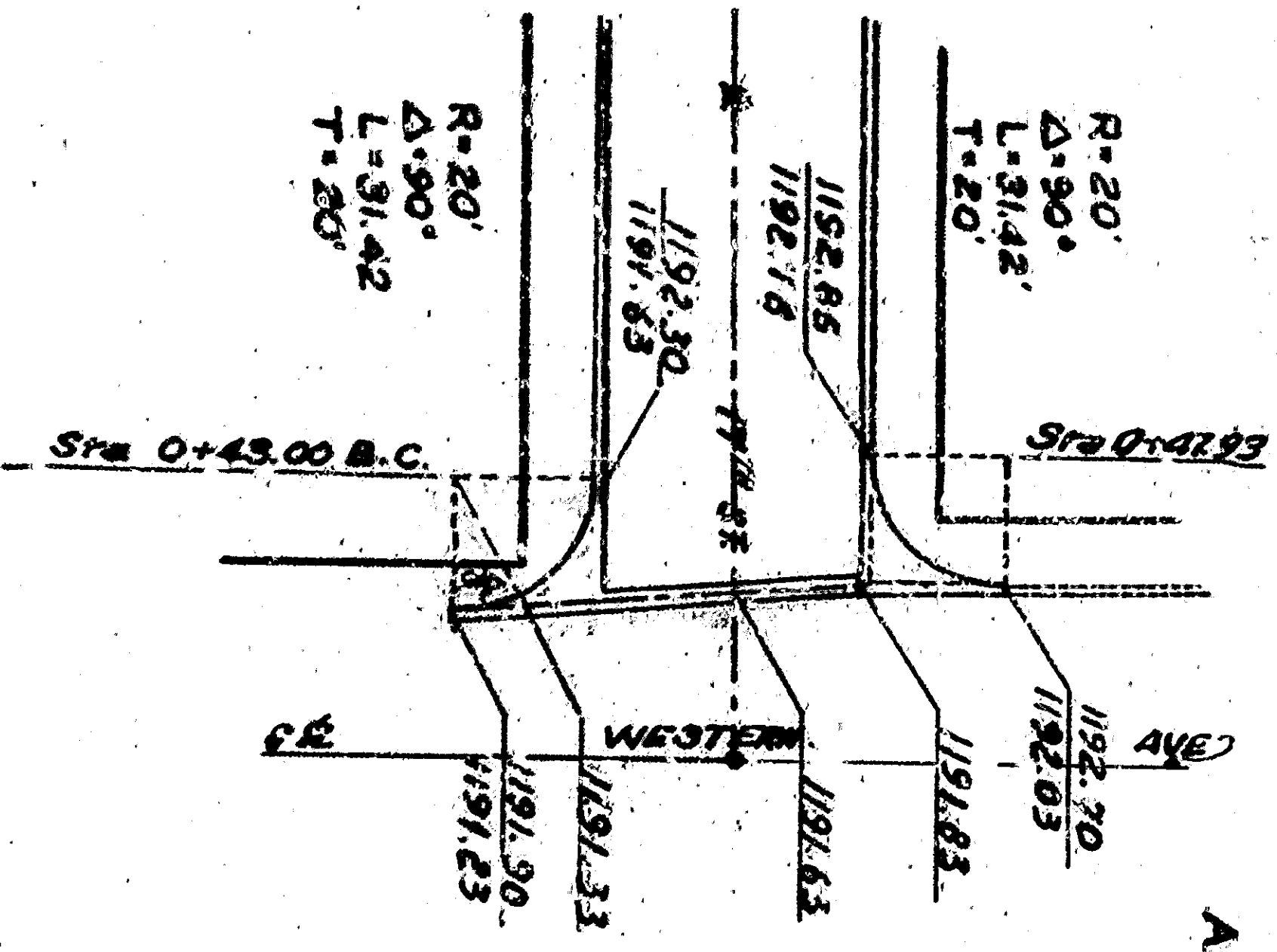
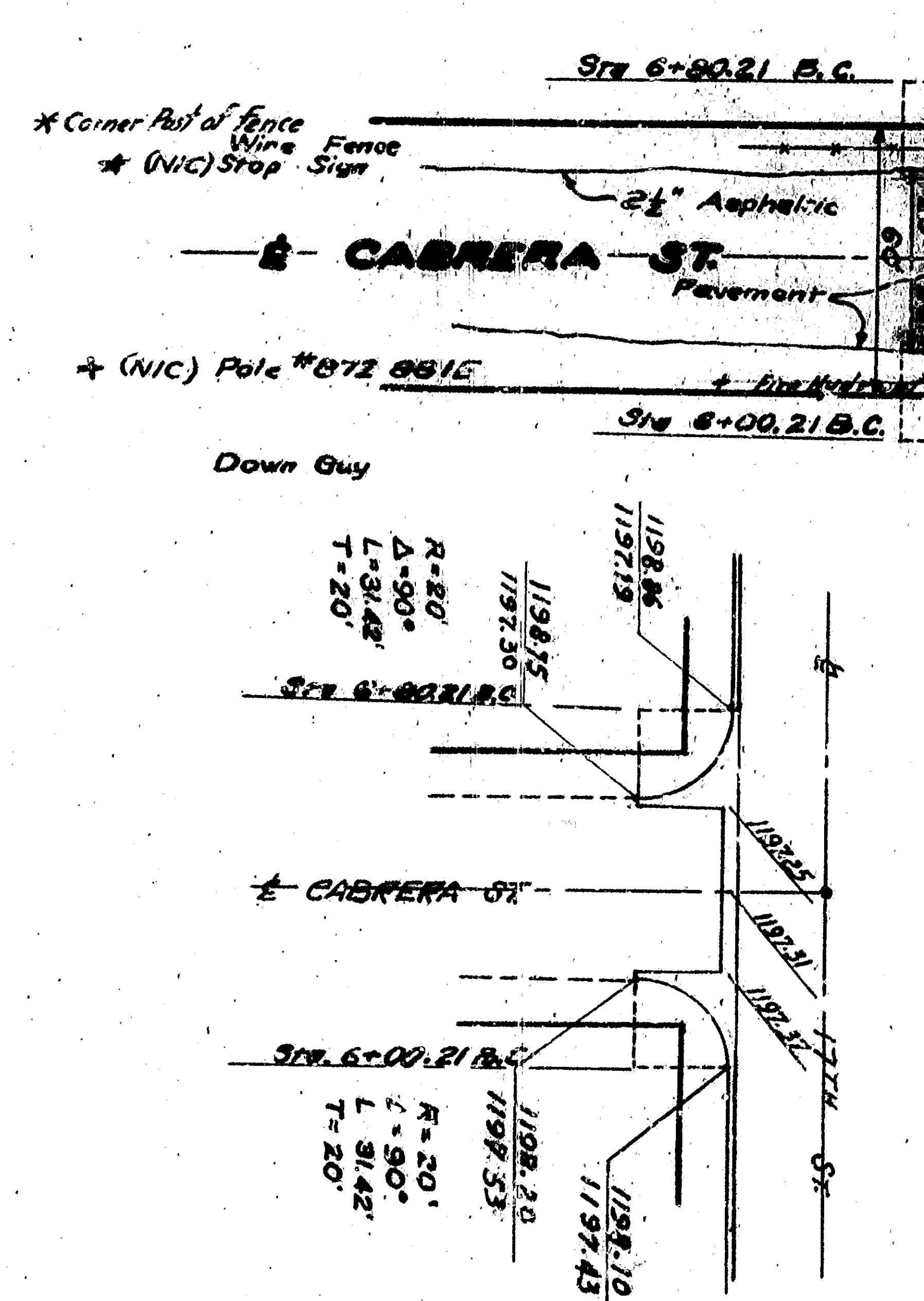
1190.00

1190.00

DEPARTMENT OF ENGINEERING
CITY OF SAN BERNARDINO
SEVENTEENTH STREET -
WESTERN AVE TO MUSCOTT ST.
WESTERN AVENUE -
WESTERN ST TO GOODLETT ST
CARA SKITLER & ASSOCIATES
ENGINEERS
SUBMITTED BY: CARA SKITLER & ASSOCIATES
APPROVED: [Signature]
DRAWN BY: [Signature]
CHECKED BY: [Signature]

Pole # F 9052 Y

Pole # F 9051 Y



DEPARTMENT OF ENGINEERING
CITY OF SAN BERNARDINO
SEVENTEENTH STREET -
WESTERN AVE TO MUSCOTT ST.
WESTERN AVENUE
CIVIL ENGINEER & ARCHITECT
SUBMITTED BY: [Signature]
APPROVED: [Signature]
DRAWN BY: [Signature]
CHECKED BY: [Signature]